



# Intelligent leadership and starship navigation

XPENG X9, a seven-seater super-intelligent vehicle



XPENG



**Intelligent power control,  
say goodbye to anxiety and welcome flexible and comfortable driving**



Full-range 800V high-voltage SiC silicon carbide platform

- Ultra-long driving range of 702km<sup>1</sup> | Minimum power consumption per 100km: 16.2kWh
- Maximum charging power 330kW | Third-party charging pile efficiency increased by 60%
- 10-minute charging for a driving range +230km<sup>2</sup>



800V XPower electric drive system

- Super powerful, 0-100 km/h in 5.7 seconds
- Maximum power 370kW | Maximum torque 640N·m
- The overall efficiency is 92% and the highest efficiency is 95.7%
- X-HP 2.0 Intelligent Thermal Management System



The world's only MPV with active rear-wheel steering as standard\*

- Minimum turning radius 5.4m | Maximum turning angle ±5°
- The average reduction in direction rotation range is 42°



The only intelligent dual-chamber air suspension in China\*

- (Including intelligent dual-chamber air spring, intelligent variable damping shock absorber)
- Maximum adjustment range: 90mm (40mm higher - 50mm lower)
- Height automatically adjusts with speed | Softness and hardness are adjustable according to driving mode | Chassis preview

## Intelligent core, immersive comfort

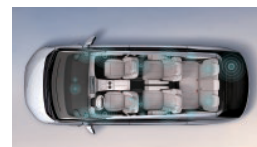
### Starship Universe Cockpit

- Flagship driver seat
- Zero-gravity Space Sofa\*
- The only electric stepless adjustment (0-176°) for third-row headrest and backrest in its class\*
- Industry-first scientific massage program\*
- Ten-point massage | 3 levels of massage intensity | Acupressure effect | 6 intelligent scenarios
- 6-layer cushion structure, comfortable and soft seating



### Immersive sensory experience

- Multi-color rhythmic surrounding LED atmosphere light
- 21.4-inch home entertainment ecosystem screen, the largest in its class\*
- X Free breath microclimate fresh air system
- Industry-first integrated electric open/close refrigerator with cooling and heating functions\*
- 23-speaker Xopera sound system



<sup>1</sup> The range here refers to the CLTC (China Light-duty Vehicle Test Cycle) range, which is derived from tests conducted under specific laboratory conditions according to the CLTC standard driving cycle. In actual usage scenarios, factors such as different environmental temperatures, road conditions, vehicle status, and driving habits can lead to differences in actual cruising range and energy consumption.

<sup>2</sup> The data is based on the charging of the vehicle at XPENG's self-operated S4 charging piles.



## Beyond ADAS, AI-driven intelligent evolution

### XNGP all-scenario intelligent assisted driving

- 27 intelligent driving sensors | NVIDIA DRIVE Orin intelligent driving chip
- 254Tops high computing power | high-speed NGP<sup>3</sup> | RPA with mobile phone<sup>4</sup> | LCC<sup>5</sup>

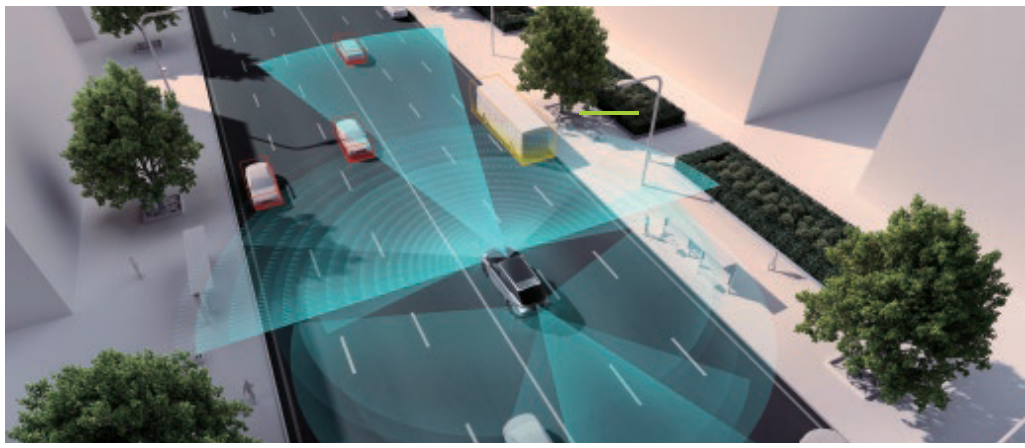
### AI Dimensity System

- Powered by the industry-leading Qualcomm Snapdragon SA8295P intelligent cockpit chip
- AI XiaoP | AI bodyguard | Split-screen multitasking | XDock | Smart multi-scenario

<sup>3</sup> This function is not available at delivery and will be realised through subsequent OTA upgrades.

<sup>4</sup> RPA (Remote Parking Assist) supports intelligent park-in and park-out control by means of mobile phone near-field communication.

<sup>5</sup> LCC (Lane Centering Control) is a comfort driving aid that assists the driver in controlling the steering wheel to consistently centre the vehicle within the current lane, but drivers should still keep their hands on the steering wheel and keep an eye on the road to avoid danger.



## Full-range safety and intelligent protection

### Designed to global safety standards

- Passed the rear collision safety test standard of China, the US and Europe
- Exceeding US standards for high-speed rear-end collisions, the collision force does not penetrate into the third row\*
- Meets C-NCAP five-star safety | C-IASI excellent highest safety design standards

### Comprehensive passive safety

- Front and rear integrated aluminum die-casting | 46000N·m/deg vehicle torsional stiffness
- 2000MPa cage body + 19-ring safety design

### Intelligent Active Safety

- 15 active safety features | 70.9L extra-large side air curtain | six-dimensional battery safety

## Unlimited space, infinite possibilities

### Superior 7.7m<sup>2</sup> interior space in its class\*

- One-touch access
- 1100mm extra-long electric slide
- 180mm center channel for easy access\*
- Invisible sunken storage room, expandable volume 755L-2,554L

### Magic space of flexible layout

- The only electrically foldable third-row seat in its class\*
- Sunny large flat area | Quiet lounge | Mobile elf castle | Wonderful cinema



Up to **702 KM** CLTC Range

Acceleration **7.70 s** 0-100 km/h

**300 KM** 10 minute charge

## Appearance color



Dark Night Black



Crescent Silver



Nebula White

## Specification

### Dimension

5,293mm X 1,988mm X 1,785mm

Wheelbase: 3,160 mm

### Battery

#### FWD Standard Range:

Battery Capacity: 84.5 kWh (LFP)  
Range: Up to 610 km (CLTC)

#### FWD Long Range:

Battery Capacity: 101.5 kWh (NMC)  
Range: Up to 702 km (CLTC)



Follow our social Media @xpeng\_id @xpeng\_id @xpeng\_id www.xpeng.co.id